

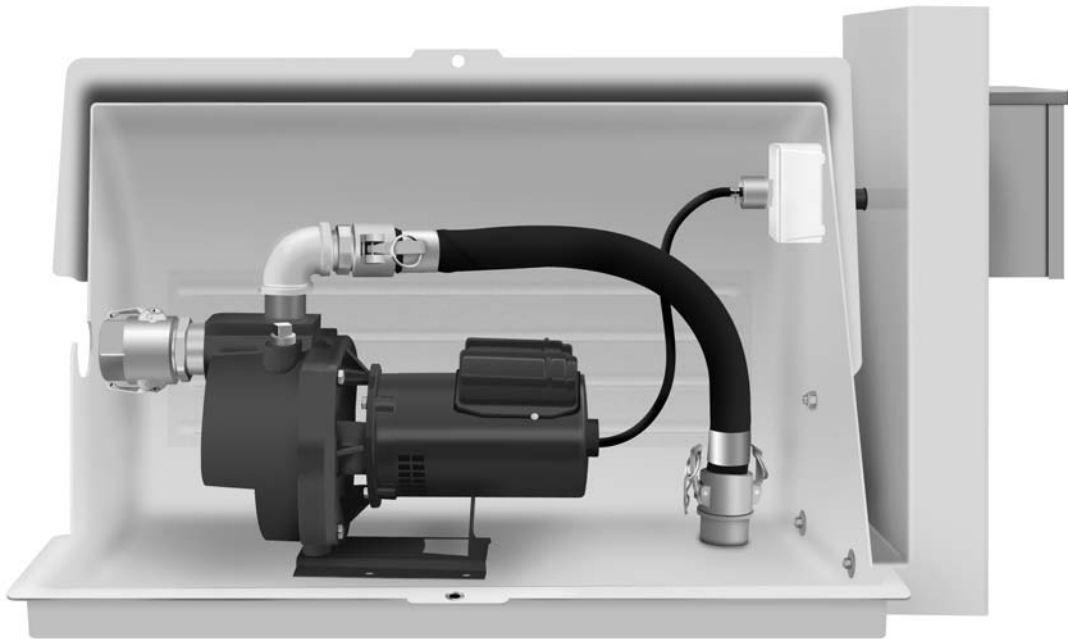
Unique Solutions For Unique Situations



Installation Manual

Operation Manual

The Complete Pro By Munro



Step 1 - Tower Installation

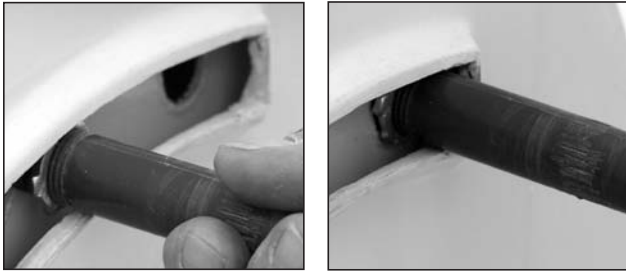
- 1** Locate the WIRE CHANNEL and TOWER BOLTS



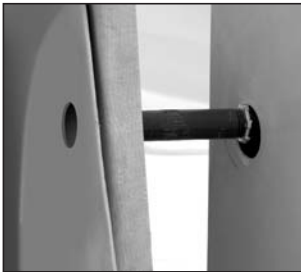
- 2** Gently spread the slotted side of the enclosure to pass the WIRE CHANNEL through



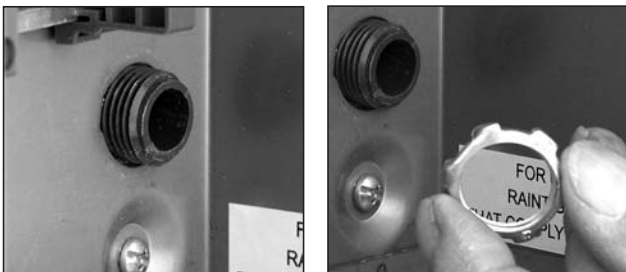
- 3** Move WIRE CHANNEL up, along slot, until it is seated into opening



- 4** Slide back of TOWER over WIRE CHANNEL



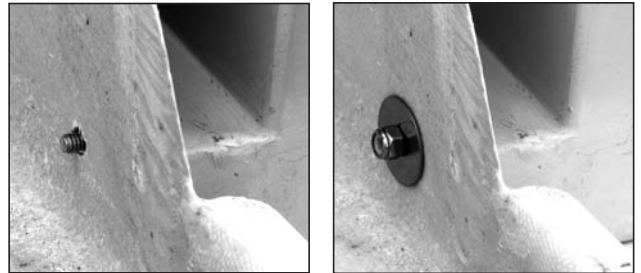
- 5** Feed WIRE CHANNEL through the TOWER and into the SMARTBOX opening - nut into place



- 6** Align bottom of TOWER and insert TOWER BOLTS, with washers, into bolt holes

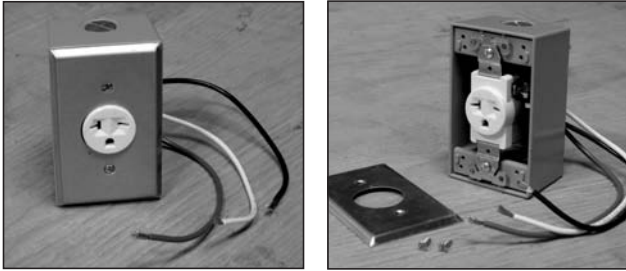


- 7** Run bolts through base holes and secure



Step 2 - Internal Wiring

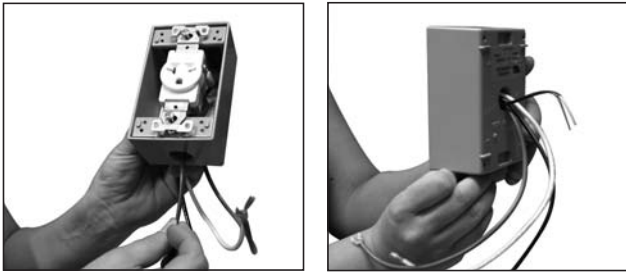
- 1 Locate ELECTRICAL OUTLET BOX & remove FACE PLATE



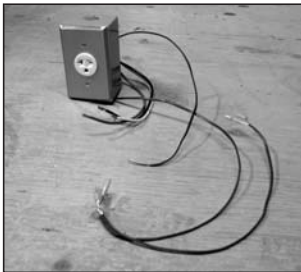
- 2 Locate SENSOR WIRE



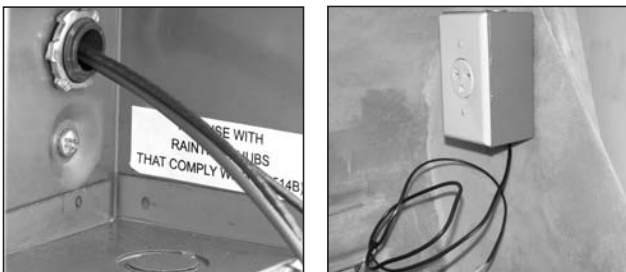
- 3 Feed long end of WIRE up through bottom & out back of OUTLET



- 4 Replace FACEPLATE



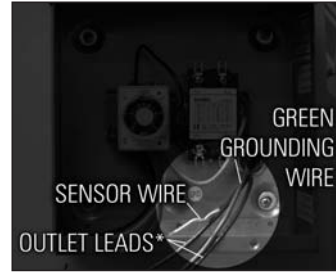
- 5 Feed wires from inside ENCLOSURE to SMARTBOX, threading OUTLET BOX on WIRE CHANNEL to secure



Step 3 - SmartBox to Pump Wiring

Note: This section will deal with the ELECTRICAL LEADS passed into the SMARTBOX in previous step.

- 1 Identify wires from outlet as shown

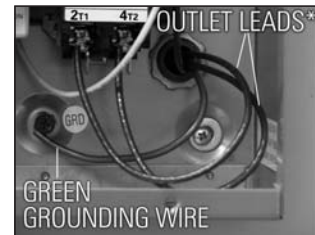


* Black/Black or Black/White, depending on voltage

- 2 GREEN GROUNDING WIRE attaches to GREEN GROUNDING SCREW



- 3 Attach the OUTLET LEADS to CONTACTOR 2T1 & 4T2



* Black/Black or Black/White, depending on voltage

Step 4 - SmartBox to Sensor Wiring

Note: This section will deal with the SENSOR WIRE passed into the SMARTBOX in Step 2.

- 1 Using the WIRE LEADS provided in the SMARTBOX, identify the wires as follows:

White: Common Lead
Black: Master Valve Lead
Blue: Sensor Wire Lead
Red: Sensor Wire Lead



- 2 Using wire nuts, attach RED side of the SENSOR WIRE to the RED LEAD, attach WHITE side to BLUE LEAD.



Black and White Leads connect to Lawn Controller Master Valve and Common (see lawn controller manual)

BREAKER BOX TO SMARTBOX

- Be sure breaker is in 'OFF' position before wiring
- Refer to SMARTBOX wiring diagram
- Power wires from breaker box will attach to top of contactor at 1L1 & 3L2

Step 5 - Pump Preparation

- 1 Remove upper 3/4" PLUG from case



- 2 Remove 1/4" PLUG from under side of pump case



Note: Use of teflon tape and/or pipe dope is needed on all npt metal to metal threaded fittings. (Not Pictured)

- 3 Identify 1 1/2" CLOSE NIPPLE and 1 1/2" 90° ELBOW

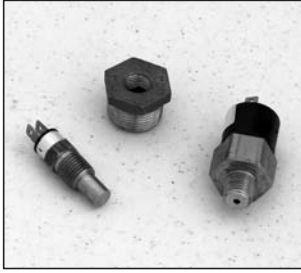


- 4 Screw NIPPLE into DISCHARGE HOLE on top of pump case. Thread ELBOW onto NIPPLE

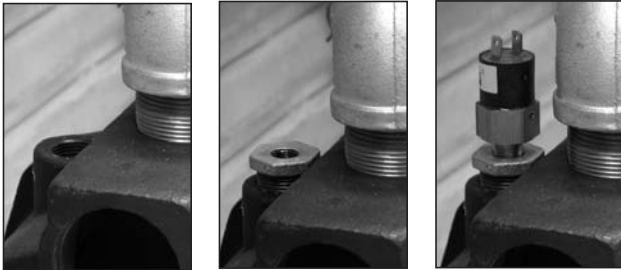


Step 5 - Pump Preparation - Continued

- 5** Identify SENSORS and 3/4" x 1/4" BUSHING



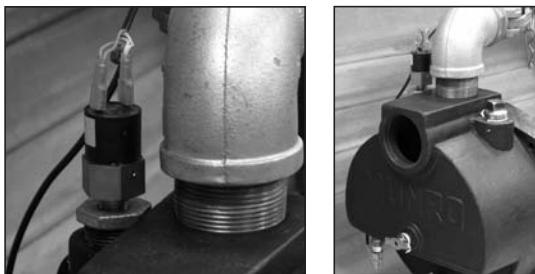
- 6** Thread BUSHING and PRESSURE SENSOR into open 3/4" hole (Step 1)



- 7** Thread TEMPERATURE SENSOR into 1/4" hole (Step 2), attach SENSOR



- 8** Attach upper SENSOR



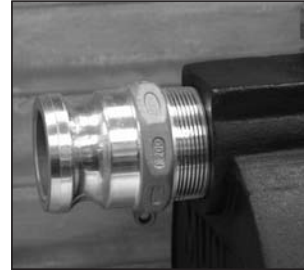
- 9** Identify 1 1/2" & 2" male threaded QUICK DISCONNECT FITTINGS (Part F)



- 10** Thread 1 1/2" PART F into 90° ELBOW (Step 4)



- 11** Thread 2" Part F into suction hole on case front



- 12** Identify 2" female threaded QUICK DISCONNECT FITTING (Part D)



- 13** Attach to 2" Part F (Step 11)

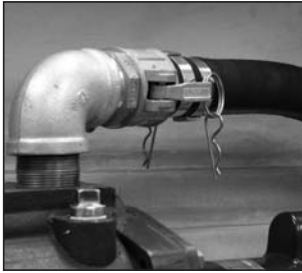


- 14** Identify HOSE with FITTINGS



Step 5 - Pump Preparation - Continued

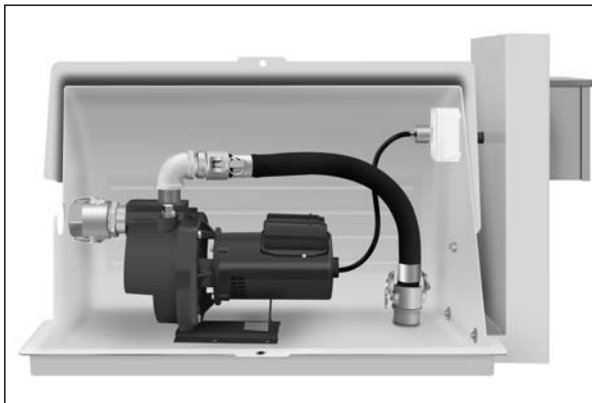
- 15** Attach HOSE end to 1 1/2" Part F on DISCHARGE (Step 10)



- 16** Identify GLUE FITTING (Part F)



- 17** Glue in place to PVC PIPE going to pump system -- Attach HOSE



Unique Solutions For Unique Situations



Installation Manual

Operation Manual

*For more information or details
on this or any other product, contact your
Munro Pump Sales Representative today!*

GRAND JUNCTION, COLORADO 81501

800-942-4270

FAX: 970-263-2277

OR VISIT US ON THE WORLD WIDE WEB:

